

# ENERGY PERFORMANCE CONTRACT CASE STUDY

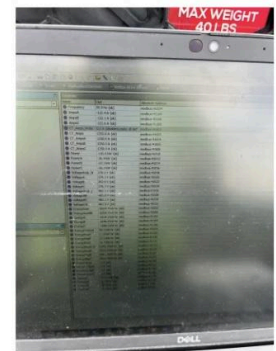
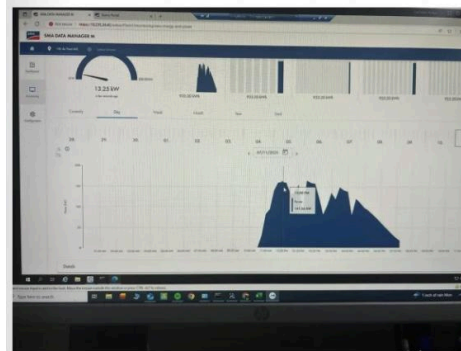
## Red Clay Consolidated School District 2025



### AT A GLANCE

#### Energy Conservation Measures

- 1.4 MW AC Solar at 6 buildings
- Enclosure that collects real-time performance data and allows for remote diagnostics of the systems.



### PROJECT OVERVIEW

As part of the Red Clay Phase 2 ESCO project, 1.4 megawatts AC of solar were installed at 6 buildings in the district. The arrays were funded through the Solar for School Districts grant and Performance Contracting Program from Energize Delaware. To validate the performance of each of these systems, a solution had to be developed to collect the data necessary to comply with the ongoing Measurement and Verification requirements. This data includes power production of the array and on-site weather conditions which impact power production.

The enclosure collects real-time performance data and allows for remote diagnostics of the systems. This will allow the M&V team to create annual production reports of the systems that validate savings, according to ASTM standards, and show the impact they have for the district.

